



Mincey Marble Mfg., Inc.

4321 Browns Bridge Road
Gainesville, GA 30504

Ph: 800.533.1806

Fx: 770.531.0935

www.minceymarble.com

Installation Instructions for Mincey Marble Manufacturing's

**Old World Classic 18" x 18" Travertine - IL
Panel Surrounds – Textured Stone Finish**

Product number: TS-OWC/ Travertine - IL

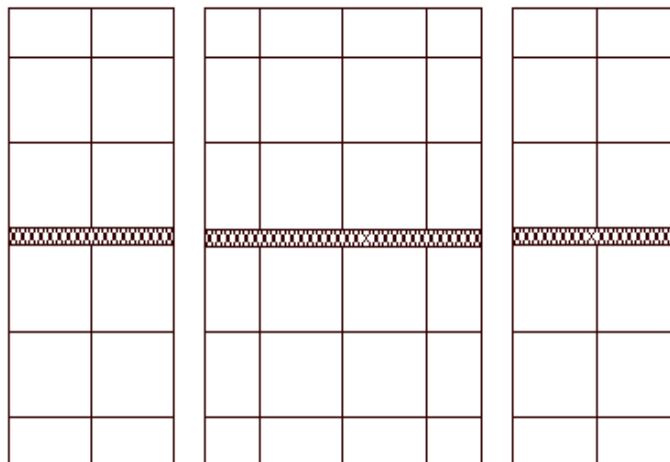


TS-OWC/Travertine-IL

**Please read the following before attempting to install your cast stone
Travertine tub and shower surrounds**

*These instructions have been written for Mincey Marble's Old World Classic 18" x 18"-
Travertine with integral listello cast stone panel surrounds. If you have a different pattern
than shown below, please call us for instructions for the design you have purchased.*

**NOTE: We do not recommend using this type of surround for lower than ceiling height
surrounds, as you must cut the top of the panels, if necessary, to adjust the height of the
panels. In doing so, you will have a raw edge where the cut is.**



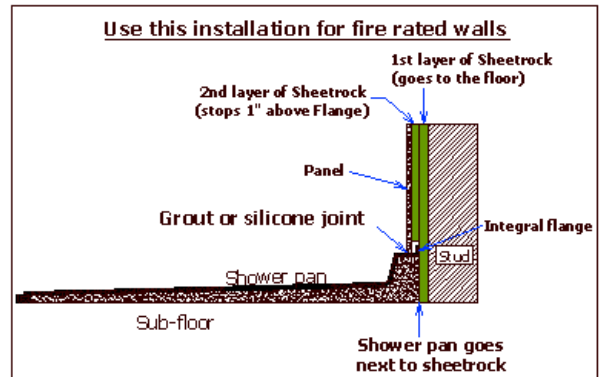
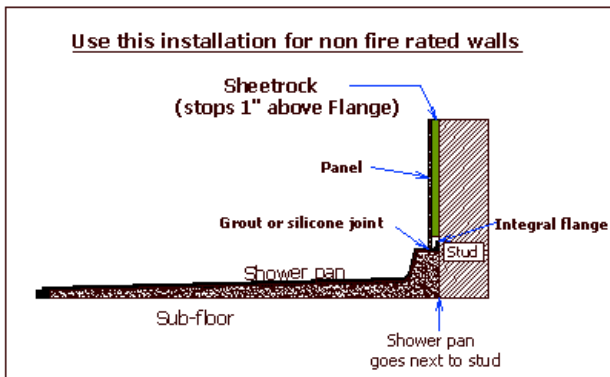
Special care must be taken in handling these panels, especially in cold weather. The indented grout lines are of necessity a little thinner than other areas of the panels causing this type of panel to be more fragile than our typical cast stone panels.

IMPORTANT: Panels are to be at room temperature (65 degrees or above) when being cut and during installation. If panels have been stored outside in cold weather, bring them inside 24 hours prior to installation so they can warm. If this is not possible, use extreme caution as cold weather makes the panels brittle and may cause excessive breakage. This type of breakage is not covered by Mincey Marble's warranty.

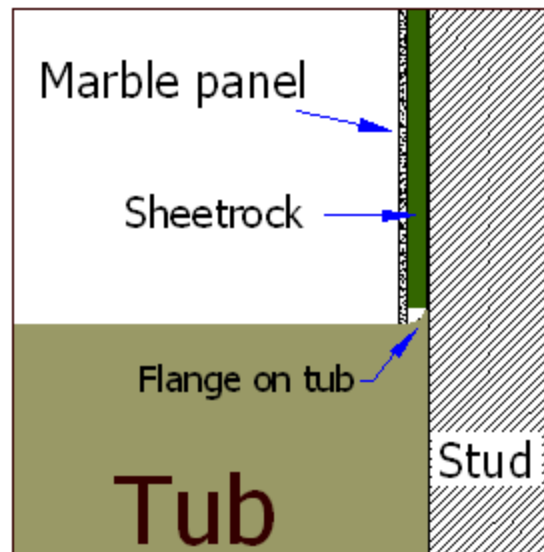
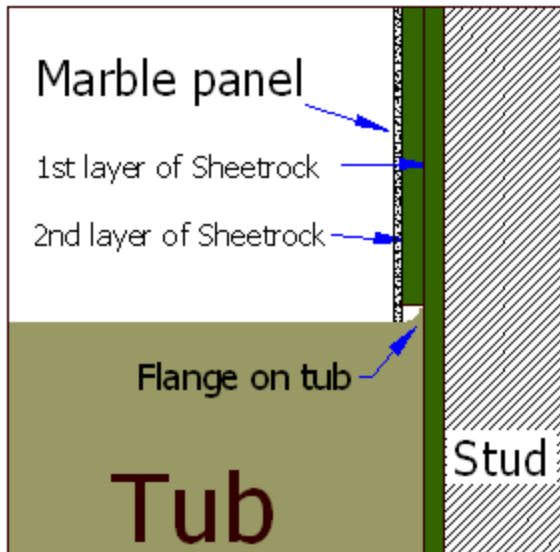
IMPORTANT: The tub/pan should be installed before the substrate. This is so that the flanges on the tub/pan will be behind the substrate. If the tub/pan is installed after the substrate, the flange will be outside the edge of the substrate when the panels are installed, the bottoms of the panels will be bowed outward. If the tub/pan is already installed and the flanges are outside the substrate, an additional piece of substrate should be installed so that the flange is underneath the substrate, but should stop about 1" above the flange. The substrate around the entire enclosure should not be resting on the flange of the tub/pan. (See drawing A).

Drawing A:

Standard Pans



Standard Tubs



IMPORTANT: If grab bars are to be installed, blocking (either 2x4 or 2x6) should be installed behind the substrate before attempting to install the grab bars on the panels. The holes for the grab bars should be pre-drilled in the same area of the blocking prior to installing the grab bars. Failure to do this will cause the grab bars to come loose and could cause breakage or cracking of the panels. This type of breakage is not covered by Mincey Marble's warranty.

Materials/Tools required:

1. Circular saw with a masonry blade
2. Drill for using hole saws
3. Saw horses
4. 2x4s for saw horses to help support the panels
5. Sandpaper (recommend using 80 grit) for sanding cut edges
6. Measuring tape
7. Pencil
8. 4' level
9. Acetone
10. Dry rag
11. Construction adhesive to adhere panels to drywall
12. Hole saw or jig saw to cut holes for plumbing fixtures
13. 100% silicone for marble to marble seams
14. Latex caulk for marble to drywall seams
15. 1" x 2" or 1" x 4" material for bracing panels

1. **INSTALLERS NOTE:** It is important that before you begin installation of the cast stone shower surrounds, that you check the level of the tub or shower pan. Check the level of the pan by placing your level on the curb of the pan. Check the level of the tub by placing your level on the deck of the tub. If you have a cast stone pan and it is out of level, you may be able to shim the low side. If you need to level the pan with shims, you will need to also check to make sure the pan does not rock. If it is rocking, you will need to add shims to stop the rocking. If you have a tile pan, a maximum tolerance for being out of level is $\frac{1}{4}$ ". The maximum tolerance for seams in cast stone shower is $\frac{1}{8}$ ".

2. **INSTALLERS NOTE: The bottom of the panel will have a partial (10 1/8") tile with a factory edge on the bottom tile. If the panels have been ordered full length (95"), then either end of the panel can be used as the bottom.** Before determining the height of your panels, you will need to check the tub/pan for level. If the tub/pan or floor is not level, you will want to trim the bottom of the panel so that the grout lines will be level when installed. (For example: If the tub/pan is $\frac{1}{8}$ " out of level, with the right side being low, you will want to trim $\frac{1}{8}$ " from the left side of the panel going to nothing on the right side of the panel.) Now that this is complete, you can measure the height of the panels. Even if the ceiling is not level, you will trim the rest of the height of the panels on the top of the panel, so checking the level of the ceiling is not necessary. Determine the height of your panels. You will want to measure on each end and in the middle of the wall to get your dimensions. Transfer these dimensions to the panel and trim the top of the panel to fit. The sides of the back panel must be trimmed from each end to keep the tile pattern centered on the back wall. You will need to measure across the opening of the enclosure at the top, in the middle and across the bottom. Transfer these dimensions to the back panel and trim the sides to fit.

3. Now that the panel has been trimmed to fit, you may proceed with installing the back panel. Sand cut edges with 80 grit sandpaper to help prevent chipping and to keep from cutting hands while handling. Dry fit the panel in position and ensure that the seams are good. Once you are satisfied with the seam on the bottom of the panel, clean the back of the panel with acetone (do not use water based cleaners or denatured alcohol), this will make for better bonding to the wall. Clean the wall with a dry rag to remove dust. Now apply adhesive to the wall. Large pads of adhesive works best for adhering to the wall. Now set the panel in place, pressing firmly against the panel to ensure proper adhesion.

4. Using a level, make a vertical (plumb) line flush with the outside edge of the pan curb or the outside edge of the tub, extending to the ceiling. This will give you a reference line to keep the outside edge of the panel plumb during installation. If you have trimmed the bottom of the back panel, you will need to trim the same amount from the side panels, so that the grout lines will line up when installed. **Note: You may want to measure from the tub/pan to the middle grout line on that side of the back panel, and do the same on the side panel you are going to trim. This will help in aligning the grout lines.** You will trim the top of the side panels in the same manner as the back panel, except for all of the cuts for the width of the side panels will be made on the back side of the panel (the side going against the back wall). Sand the cut edges of the panel as with the back panel. Dry fit the panels, making sure the grout lines are even. If they do not line up, trim or shim the bottom of the panel to get them aligned. Clean the back of the panel as with the back wall and clean the wall. Apply adhesive in large pads and install the panel.

5. On the plumbing wall, you will want to measure from your plumb line and from the ceiling to the center of the valves and water outlet(s), to ensure accurate placement of the holes for the plumbing. **Mark the placement of your plumbing holes after the panel has been trimmed to fit.** Cut the holes for the plumbing with a hole saw or jig saw, making sure not to cut the holes too large for the plumbing trim to cover. Dry fit the panels, making sure the grout lines are even. Follow the same procedures as above for finishing installation of this panel.

6. Once all of the panels have been installed, brace the walls with scrap 1x2's or 1x4's. Make sure to use a short board on the end of each brace to distribute the pressure of the bracing. Do not put too much pressure on the panels, especially at the grout lines or along the border (listello).

7. Once the adhesive has dried, you can remove the braces. You will caulk the seams with 100% silicone that closely matches the color of the panels. All of the seams inside the shower enclosure should be caulked with silicone. The outside edges of the panels touching substrate or wallpaper can be caulked with a latex caulk.

If you have any questions, please call Mincey Marble Customer Service at 800.533.1806.