



**Mincey Marble Mfg., Inc.**  
4321 Browns Bridge Road  
Gainesville, GA 30504  
Ph: 800.533.1806  
Fx: 770.531.0935  
[www.minceymarble.com](http://www.minceymarble.com)

## Installation Instructions for Mincey Marble Manufacturing's

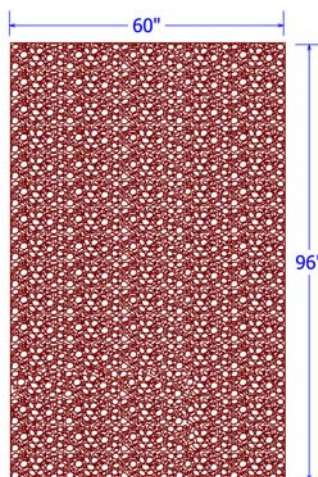
### River Rock Accent Panel

Product number: TS-CS – River Rock



**Please read the following before attempting to install your cast stone tub and shower River Rock Accent panel**

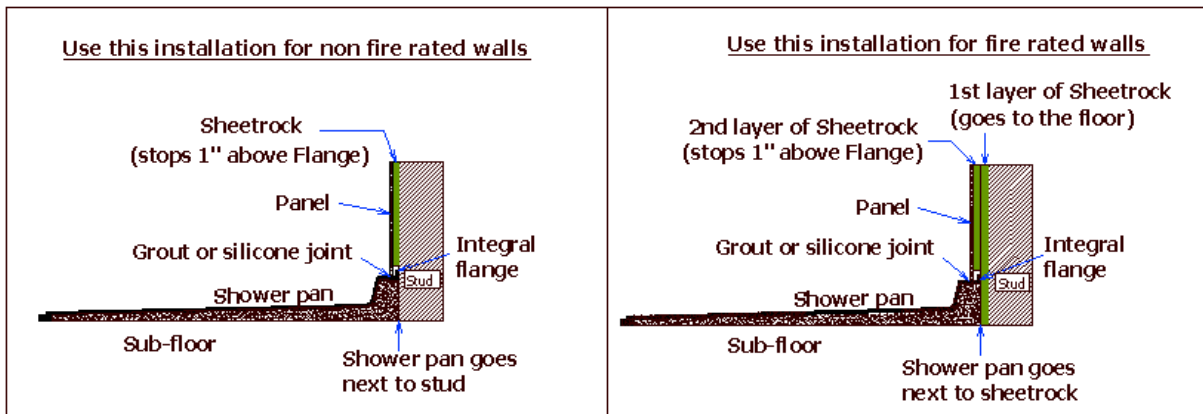
*These instructions have been written for the TS- CS River Rock cast stone accent panel with gloss finish. If you have a different pattern than shown below, please call us for instructions for the design you have purchased.*



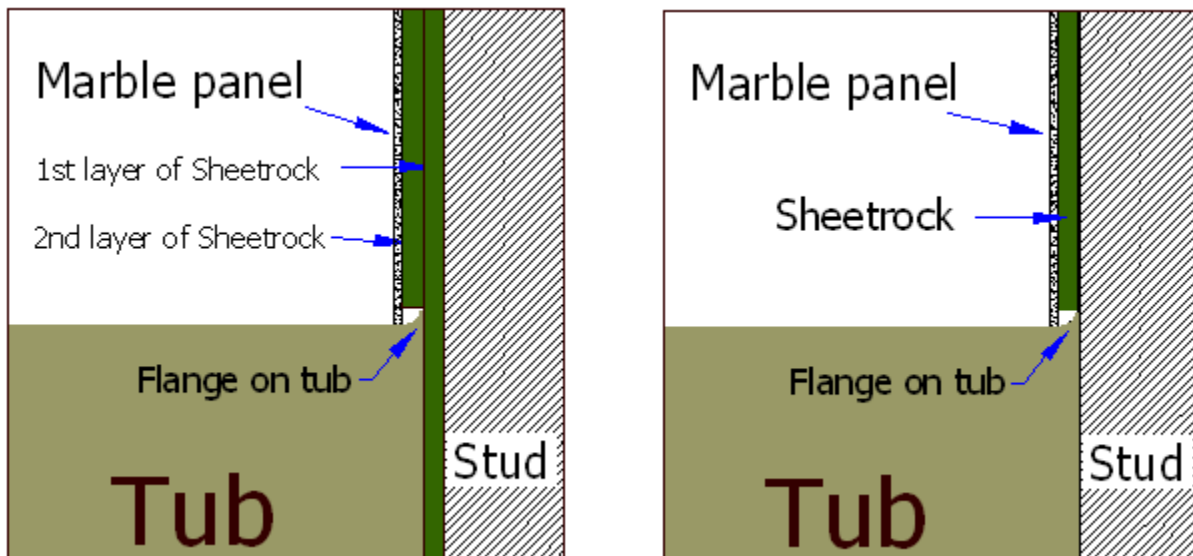
**INSTALLERS NOTE:** The tub/pan should be installed before the substrate. This is so the flanges on the tub will be behind the substrate. If the tub/pan is installed after the substrate, the flange will be outside the edge of the substrate and when the panels are installed, the bottoms of the panels will be bowed outward. If the tub/pan is already installed and the flanges are outside the substrate, an additional piece of substrate should be installed so that the flange is underneath the substrate, but should stop short about 1" above the flange. (See drawing A).

**Drawing A:**

## Standard Pans



## Standard Tubs



**IMPORTANT:** Panels are to be at room temperature (65 degrees or above) when being cut and during installation. If panels have been stored outside in cold weather, bring them inside 24 hours prior to installation so they can warm. If this is not possible, use extreme caution as cold weather makes the panels brittle and may cause excessive breakage. This type of breakage is not covered by Mincey Marble's warranty.

### **Materials/Tools required:**

1. Circular Saw with a masonry blade
2. Drill for using hole saws
3. Saw horses
4. 2x4s for saw horses to help support the panels
5. Sandpaper (recommend 80 grit) for sanding cut edges
6. Measuring tape
7. Pencil
8. 4' level
9. Acetone
10. Dry rag
11. Construction adhesive to adhere panels to drywall
12. Hole saw or jig saw to cut holes for plumbing fixtures
13. 100% Silicone for marble to marble seams
14. Latex caulk for marble to drywall seams
15. 1" x 2" or 1" x 4" material for bracing panels

### **Installing the River Rock Accent panel:**

1. Check to see that the tub/pan is level from front to back and left to right. The maximum tolerance for level is +/- 1/4". Also note that a gap of 1/8" is the maximum tolerance on marble seams.
2. The back wall and the other matching wall for that design of surround should be installed first, according to the directions for that design of cast stone surrounds. These instructions can be acquired from Mincey Marble or from our web site: [www.minceymarble.com](http://www.minceymarble.com).
3. The River Rock Accent Panel surround wall is an end panel and because it's a single panel, it will be very simple to install.
4. If the River Rock Accent Panel is to be used as the plumbing wall, you will want to cut the panel to fit before measuring and drilling the holes for the plumbing. This will help to keep the holes from not aligning with the rough-in plumbing. Measure the locations for the plumbing and use appropriate sized hole saws or jig saw to cut the holes. Be sure not to cut the holes larger than the plumbing trim will cover.
5. Sand the cut edges with 80 grit sandpaper. This will help to prevent chipping and also will keep from cutting your hands while handling the panel. Dry fit the panel to ensure that the plumbing lines up with the holes you have cut and to ensure that the panel fits correctly.
6. Clean the back of the panel with either a clean, dry cloth or with acetone and a clean cloth. Do not use denatured alcohol to clean the back of the panel. Denatured alcohol can leave behind a watery film that will inhibit the adhesion of the panels.
7. Make sure that the wall is clean and dust-free. Wipe down the wall with a clean, dry cloth and apply adhesive to the wall.

8. Install the panel, making sure that the panel is firmly against the substrate.
9. After all three walls have been installed; it is best to brace the walls with 1" x 4" or 1" x 2" scrap, being careful not to put too much pressure on the panels, as they are fragile. Use a small block of wood on the ends of each side of your brace to help distribute the pressure.
10. Install trim next to the side panels, measuring from the tops of the panels to the floor (if applicable). Trim is designed to run from the top of the panel to the floor.
11. Install soap dishes on panels. If using cast stone soap dishes or ceramic soap dishes, see separate instructions for these.
12. After the adhesive has had time to dry, remove the bracing and caulk all of the joints where marble touches marble or the tub with 100% silicone that closely matches the color of the marble. Caulk the marble to substrate walls with a latex caulk.

**If you have any questions, please call Mincey Marble Customer Service at 800.533.1806.**